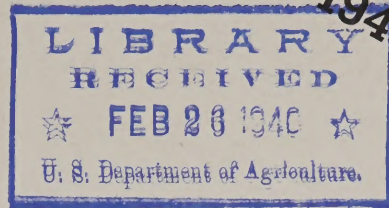


Historic, Archive Document

Do not assume content reflects current scientific knowledge, policies, or practices.



CHRYSANTHEMUMS
for 1940



GWEN PATTON

(34-47)

Best pink in the commercial large incurve we know of. Good keeping quality, good foliage, strong stem, and very excellent substance of this flower should rank it at the top for late October pink. For commercial growers who make long distance shipping we recommend this variety strongly and will appreciate your fair trial. Height 4 feet tall. Matures late October.

PRICE: \$1.00 each, \$10.00 per doz.,
\$50.00 per 100.

62.03

SUNNYSLOPE 'MUMS GARDENS

3018 Huntington Drive, at San Gabriel Blvd., SAN GABRIEL, CALIF.

Telephone ATLantic 2-1364

PLANTS: April to July

SHOW: October and November

WILLA TEMPLIN

(38-54)

The graceful character of this flower and its most pleasing bronze shade has been acclaimed by many chrysanthemum experts and commercial growers. In the floral arrangement division of our Show last fall, we have received more comments on this variety than any others exhibited. This exhibition type is excellent both as commercial cut flower and for pot culture.

Height 4 feet. Blooms Oct. 28th on.
PRICE: \$1.00 each, \$10.00 per doz.,
\$50.00 per 100.





MAMORU

Dark orange with increasing bronze toward center. Excellent for commercial cut flowers, having strong stem and abundant foliage. The flower is of good keeping quality. Height medium, maturing Oct. 30th on.

PRICE: 35c each; \$3.50 per dozen, \$15.00 per 100.

NIGHTINGALE (Green)

A cut-flower sensation of Los Angeles Market. This variety is also a rare novelty for any people's collection. The popularity of this flower is clearly manifested by the Press unanimously carrying in their headlines as the most rare chrysanthemum when exhibited at the Brookside Park, Pasadena, California, last fall. Select latest bud for best color. Blooms around October 25th on. Height 4 feet. PRICE: \$1.50 each.



TERMS OF SALE

(Read carefully before ordering)

The following price list cancels all previous quotations.

PRICES: All prices quoted are for rooted cuttings F. O. B. San Gabriel, California, plus 3% sales tax within State.

PAYMENTS: Cash must accompany with all orders including the carriage charges if preferred shipments by Parcel Post. Remittance may be made by check, certified check, postal or express money orders. Do not send currency unless by registered mail.

SHIPMENTS: All shipments below \$5.00 in value will be made by Parcel Post unless instructed otherwise by the purchaser. All orders above \$5.00 will be shipped by Railway Express.

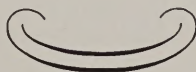
CARRIAGE AND PACKING CHARGES: There is no packing charge, but carriage charges will be paid by the purchasers at all times. Orders by Parcel Post should include postage at the rate of 10c for the first dozen cuttings, 4c for each additional dozen.

NOTICE will be mailed to you upon receipt of your order if we are unable to ship immediately.

CLAIMS: No complaints entertained unless made in writing immediately upon receipt of goods. Absolutely no adjustment will be made on complaints made later than 10 days after arrival of goods.

NON-WARRANTY: While we endeavor to use every possible care to have all varieties properly labeled and true to name, but alike all dealers in similar trade, we give no warranty, express or implied, as to the crop, its variety or product of which we have no control.

PLEASE NOTE: 12 of one NAME is quoted at dozen rate; 30 at 100 rate; and 250 at 1000 rate.



OUR SELECTIONS. Customers who are not familiar with the names listed in our catalog, often send in orders asking us to ship plants of our selection. In making such orders, please note carefully the types wanted, your preference of colors and the blooming period. We will then send out plants which will best meet your requirements and most suitable to your locality.

COLOR VARIATIONS. Colors given in our catalog, particularly the pink and bronze of the early blooming varieties vary some season under different weather conditions. Experiences show that the colors are more distinct when grown in cooler district or when flowers bloom after the approach of cooler weather. Similar differences occur sometimes when grown in the Southern States and that in the Northern States even though the same variety has been sent out from us.

SIMILAR VARIETIES. We receive sometimes complaints regarding that the varieties, "Harvard," "Garnet King," and even "Helen Hubbard" which we have sold are identical and that the difference is imperceptible to warrant their different names used. When varieties are grown in sprays, it is sometimes difficult to detect the differences and therefore advisable for the beginners to select their plants from the wider range of colors rather than to limit your selections when purchasing several plants.

NEW INTRODUCTIONS FOR 1940

★ **BEN TASHIMA.** (31-65) See illustration.

BESS WITT. (Sport of Peggy Ann Hover.) Deep apricot bronze. This variety was the center of interest at the Pasadena Flower Show last fall. No doubt this unique variety will be a good addition to your early flowering spiders. Height 3½ feet, maturing mid-October on. PRICE: \$1.00 each, \$5.00 per dozen.

FUMIKO TASHIMA. (S-51) Novelty single chrysanthemum. See illustration.

GALLANT KNIGHT. (SP-116) White spider of medium tubular petals. This fine variety will cut well and certainly be a lovely addition to your collection of discriminated novelties. Grows 5 ft. tall, maturing around Nov. 1 on. PRICE: \$1.00 each, \$10.00 per dozen.

GOLDEN HARP. (-26) Very large yellow exhibition chrysanthemum. See illustration and description.

★ **GWEN PATTON.** (34-47) New commercial pink. See color plate.

HACHIMANZAN. Novelty importation of Mobile petalled type. The color is brilliant red. The petals swirl more completely some season than another. Excellent for sprays and specimen exhibition pots. Medium height, blooms around November 1st on. PRICE: \$1.50 each.

HILO (L-63). Pinkish buff Exhibition type. See illustration and description.

KIMIE TASHIMA (S-39) Very bright golden novelty single. See illustration and description.

LAVENDER GOWN (Osho Yushi). A lavender spider of special merit. One of our new importations. Very easily grown, having luxurious foliage and the large flower is supported with strong, rigid stems. Excellent for pot culture; also for cut chrysanthemums. Height medium. Blooms Nov. 1st on. PRICE: \$1.00 each, \$10.00 per dozen.

NUNOBIKI (38-10) The best description for this large flower is White "Kegon No Taki." The shape of the flower is same except the color. Grows to 3½ feet tall blooming about October 20th on. PRICE: \$1.00 each, \$10.00 per dozen.

★ **OCTOBER MAPLE** (12-123) The shape of this flower is like our other popular variety, "Mamoru." The flower is somewhat smaller than the latter but the color is of deeper bronze shade. Excellent color and strong stems make this variety a very good cut flower. Height 4 feet. Matures about November 1st on. PRICE: 50c each, \$5.00 per dozen, \$25.00 per 100.

SAN GABRIEL (SP-103) Extremely full yellow spider of medium tubular type. One of the largest spidery varieties we know. Excellent in pot for exhibition purposes. Its marked popularity is clearly manifested by the amount of orders we received for this variety during the show. Height 4 feet. Matures around October 25th. PRICE: \$1.00 each, \$10.00 per dozen.

SAN MARINO (SP-19) This splendid yellow spider variety has been very popular during our show because of the uniformity of petals. We recommend this variety for both pot culture and as cut flower growing. Height 4 feet tall. Matures around Nov. 5th on. PRICE: \$1.00 each, \$10.00 per dozen.

★ **SUE SALLY JONES** (SP-107) See illustration.

★ **SUNNYSLOPE WHITE** (38-7-72) See illustration on back cover.

★ **WILLA TEMPLIN** (38-54) See color plate front cover.

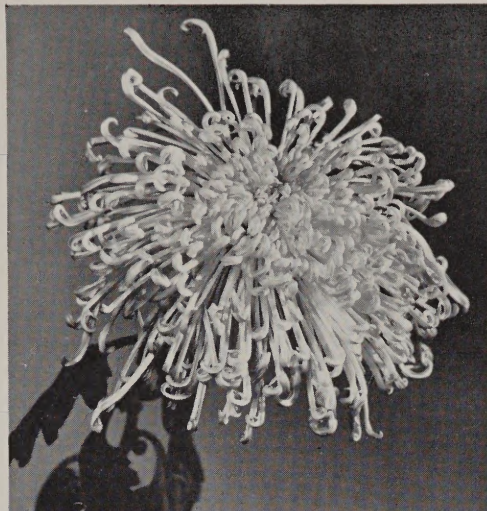
★ Very good cut flower.



KIMIE TASHIMA
(S-39)

Very bright golden novelty single. Can be grown in sprays and when disbudded will have blooms well over 8" in diameter. Height 3 feet. Matures November 1st on.

PRICE: \$1.00 each, \$10.00 per dozen.



SUE SALLY JONES
(SP-107)

Large tubular yellow spider. Of the numerous spider varieties we have handled, we believe this variety has the near perfect qualifications for being an excellent commercial cut flower in this class. This large and graceful flower with splendid foliage will keep over two weeks after being cut. The stocky stem will easily support this excellent flower. Height 5 feet. Matures Nov. 5th on.

PRICE: \$1.00 each, \$10.00 per dozen,
\$50.00 per 100



BEN TASHIMA
(31-65)

A splendid exhibition type of special merit. Deep purple with silver reverse, having strong stem with very heavy foliage. Grows to about 4½ feet. Maturing November 1st on. Price: \$1.00 each, \$10.00 per dozen, \$50.00 per 100.



KEGON NO TAKI

A bright yellow. One of the most popular varieties in Japan. The blooms have few layers of reflexive lower petals with the balance of incurved but twisted petals. Grows quite tall, maturing around November 1. 50c each.



FUMIKO TASHIMA
(S-51)

Light pink odd novelty. Very excellent for pot culture. Garden lovers who are seeking something different will find this variety very interesting. Will grow to 3 feet tall, blooming around Nov. 5th on. Price: \$1.00 each, \$10.00 dozen.

Collection Offer A

SPIDERS

One each of the following:

NIGHTINGALE SUE SALLY JONES
GALLANT KNIGHT BESS WITT

Catalog price \$4.50

Collection Offer **\$325**

Collection Offer B

NOVELTIES

One each of the following:

WILLA TEMPLIN BEN TASHIMA
KIMIE TASHIMA KEGON-NO-TAKI

Catalog price \$3.50

Collection Offer **\$250**

ODD TYPES

	Height	ea.
J. C. TAGGART. Bronze. See illustration.....	Med.	\$.25 (M)
KEGON NO TAKI. See illustration.....	Tall	.50 (M)
KENNY BOY. Very odd. See illustration.....	Med.	1.00 (M)
JIU JITSU. White feathery type.....	Med	.15 (M)
MIGNONETTE. Like yellow thistle bloom See illustration.....	Med	.25 (M)
P. E. BERRY. Quilled pink Good disbudded. Tip of petals like Fumiko.....	Med.	.35 (M)
PINK EXQUISITE. Excellent pink. Mobile petalled. Splendid for sprays; also disbudded. See illus.....	Med.	.25 (M)
PURPLE FROST. Deep purple. Broad feathery petals with silvery tips. Good disbudded.....	Med	.15 (L)
ROBERT BACON. Bronzy red tubular petals with golden spoon-end tips.....	Med.	.15 (L)
THE DEAN. White feathery type.....	Med.	.15 (M)
WHITE THREAD. Button-like tangled ball of thread.....	Med.	.15 (M)
YELLOW TAGGART. Yellow quilled. See illustration.....	Med.	.15 (M)
YOKI IMPROVED. White tubular petals with spoon-end tips. Identical in shape to our Yomei and Robert Bacon.....	Med.	.50 (M)
YOMEI. Golden tubular petals with red open spoon-end tips. Exact reverse of Robert Bacon.....	Med.	.15 (L)

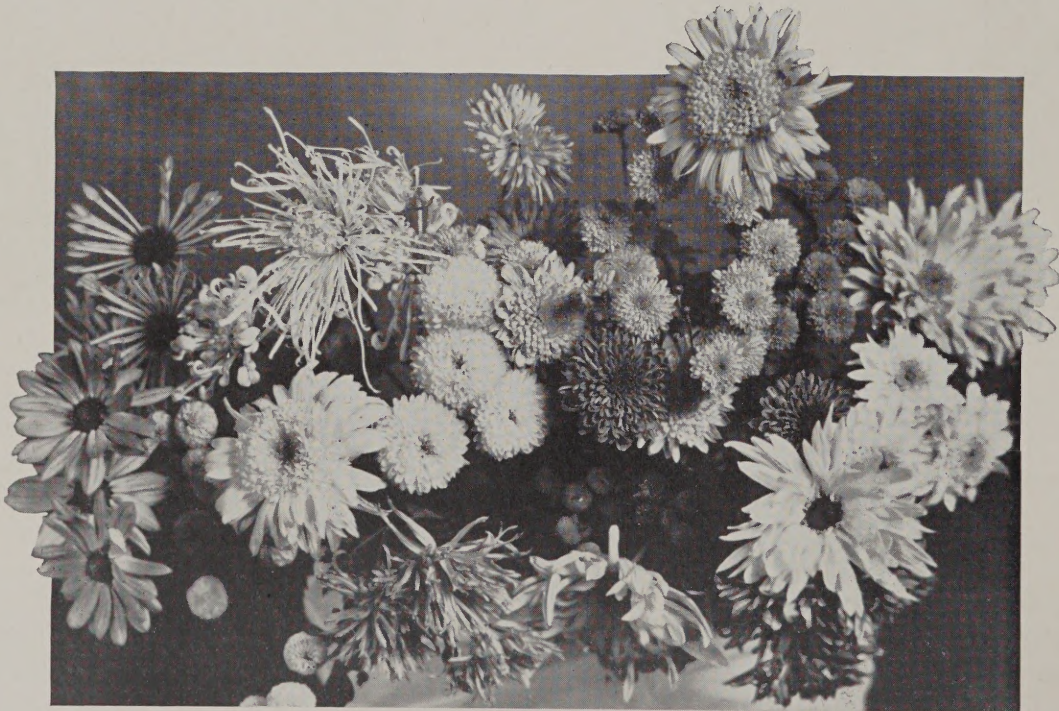
ICHIMONJI TYPES

(Broad petalled single types)

These varieties have very large, broad petals having the appearance of a large single dahlia bloom. Common with smaller singles, the colors are very vivid and bright for these varieties. If the soil is rich, do not feed them heavily. Excellent in sprays or when disbudded. Very effectively used for floral arrangements. Grows to about 2½ to 3 feet tall. Blooms October 25th on.

- GOKOKU NO KAMI.** Bronze.
- FUYO NO MINE.** White
- SHIHODEN.** Lavender
- OHGON NO HIKARI.** Bright yellow

PRICE: \$1.00 each. One of each of 4 varieties above \$3.50.



ASSORTED TYPES OF CHRYSANTHEMUMS

(E) Early

(M) Midseason

(L) Late



GOLDEN HARP
(26-L)

Very large deep golden exhibition incurve type. Flower will easily grow 8 to 10 inches in diameter from any bud. Height 4½ feet, blooming around October 15th on.

PRICE: 50c each, \$5.00 per dozen.



HILO
(L-63)

Pinkish buff exhibition type. This attractive flower has excellent foliage and is supported with strong stem. Height 4 feet. Matures around October 20th on.

PRICE: 50c each, \$5.00 per dozen.



COUNTRY MAIDEN

Exhibition type. A very compact incurve flower of apricot bronze, having very wide petals forming a perfect ball. This flower has very excellent foliage and strong stem. Height 4 feet. Matures October 25th on.

PRICE: 50c each, \$5.00 per dozen, \$25.00 per 100.



J. C. TAGGART AND YELLOW TAGGART



KENNY BOY

Yellow incurve with dark green center. The blooms are of lasting quality. The flower is supported with strong stem and has excellent foliage. Do not feed heavily for this variety. Height 4 feet. Matures October 15th on. PRICE: \$1.00 each.



ABOVE: MIGNONETTE



BELOW: PINK EXQUISITE

Collection Offer C
EXHIBITIONS AND COMMERCIALS
One each of the following:
GWEN PATTON SUNNYSLOPE WHITE
COUNTRY MAIDEN HARVEST MOON
Catalog price \$3.00

Collection Offer **\$250**

STANDARD SPIDER VARIETIES

	Height	per ea.	per doz.	per 100	
X ALICE TASHIMA. Large tubular type, white.....	Tall	.35	3.50	15.00	(E)
P AZUMA HAKKEI. Excellent bronze spider.....	Med.	.50	5.00		(M)
ANTOINETTE BUSH. White. Large tubular type.....	Tall	.50	5.00	25.00	(E)
P ARCTIC. White. Large tubular petals.....	Med.	.35	3.50	15.00	(E)
X BUNBU. Lavender. See illustration.....	Med.	.25	2.50	12.00	(M)
P BRONZE CHEER. Fine tubular petals open center.....	Med.	.25	2.50	12.00	(E)
P BRONZE CHIEF. Fine tubular petals.....	Med.	.25	2.50	12.00	(L)
P DAINTY WHITE. See illustration.....	Med.	.35	3.50	15.00	(M)
DAISEN. Golden bronze. Partially incurved.....	Med.	.50	5.00		(M)
GLISTENING WHITE. Medium tubular type with green center.....	Tall	.25	2.50	12.00	(L)
P GYOKUREN. Light lavender. Fine tube, very full.....	Med.	.75	7.50	35.00	(M)
IZAYOI. White. Small tube.....	Med.	.50	5.00	35.00	(L)
PX KAY TASHIMA. See illustration.....	Med.	.25	2.50	12.00	(E)
X MAMORU. Deep orange. See illustration.....	Med.	.35	3.50	15.00	(M)
X MARIA. Greenish cream. Large tubular petals.....	Tall	.35	3.50	15.00	(M)
X MAUVE. Deep lavender. Large tubular petals.....	Med.	.25	2.50	12.00	(M)
MISS GINA HARWOOD. Rose mauve. Sport of Rayonante.....	Tall	.15	1.50	6.00	(E)
P MRS. MARGARET DONOHUE. See illustration.....	Med.	.25	2.50	12.00	(M)
P PEGGY ANN HOOVER. Light pink. Medium tube.....	Med.	.10	1.00	5.00	(E)
X PINK FANTASY. Light pink with green center. Medium tubular petals.....	Med.	.25	2.50	12.00	(M)
PRIDE OF SUNNYSLOPE. Deep lavender. Medium tubular petals. Very large and full.....	Tall	.50	5.00	25.00	(M)
PRIDE OF TOKIO. Cream. Medium tube.....	Tall	.15	1.50	6.00	(L)
RAYON. Pink. See illustration.....	Tall	.75	7.50	50.00	(L)
RAYONANTE. Pink. Long cord-like petals.....	Tall	.10	1.00	5.00	(E)
RAYONANTE WHITE. Sport of Rayonante.....	Tall	.15	1.50	6.00	(E)
P OHKWAN. See illustration.....	Med.	.15	1.50	6.00	(M)
P SEIJIN. Excellent early light pink. Large tube. Very graceful.....	Med.	.75	7.50	35.00	(E)
P SILVER DROPS. See illustration.....	Med.	.50	5.00	25.00	(L)
X SUNNY'S BEAUTY. Very nice pink. Medium tube.....	Tall	.50	5.00	25.00	(L)
X SOUVENIR. Light salmon pink. Large tube.....	Med.	.25	2.50	12.00	(E)
UNIQUE. Rich wine red.....	Tall	.15	1.50	6.00	(L)
P VELVET. Excellent pink. Fine cord-like petals.....	Med.	.50	5.00	35.00	(L)
X WHITE FRILL. White medium tube. Good cut.....	Med.	.35	3.50	15.00	(M)
X WHITE SENSATION. See illustration.....	Med.	.35	3.50	15.00	(M)
P WM. McCABE. Good golden. Large tubular petals.....	Med.	.35	3.50	15.00	(M)



OHKWAN (Yellow)

One of the older varieties. Fine tubular petals with strong stems and good foliage. Matures around November 1. 15c each.



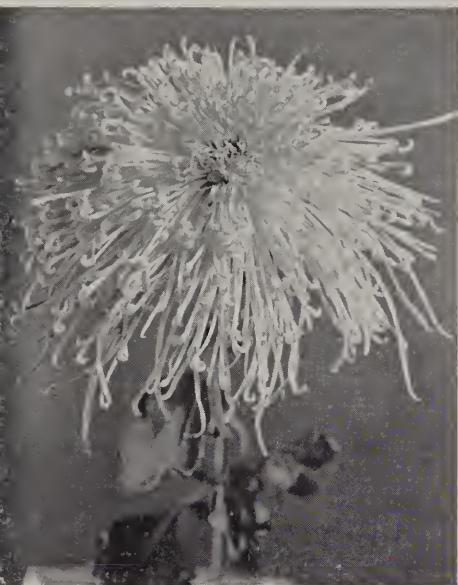
KAY TASHIMA (White)

Extremely full blooms with protuberant center. Large long tubular petals; diameter, 15 in. Grows to medium height with excellent foliage. Matures October 1 on. 25c each.

P—Good for pot culture.

X—Good for cut flower.

(E) Early (M) Midseason (L) Late



RAYON (Pink)

Fine long tubular petals; diameter, 14 inches. Grows to about 5 feet tall with nice foliage. Matures November 10 on. 75c each.



SILVER DROPS

This variety is ideal for pot culture. The petals are fine tubular with hooked end tips. The flowers can be grown to about 14 inches in diameter, with luxuriant foliage. Height 3 to 3½ feet. Matures November 10 on. Price 50c each.



WHITE SENSATION (White)

Large tubular petals; diameter, 12 inches. Strong stem together with nice foliage makes excellent cut flowers. Matures October 25 on. 35c each.



DAINTY WHITE (White)

Fine tubular type petals with hooked-up tips. Diameter 12 inches. Matures around October 25 on. Height, medium. 35c each.



ANTOINETTE BUSH (White)

Large long tubular petals; diameter 15 inches. Height tall and matures around October 20. 50c each.



MRS. MARGARET DONOHUE (Yellow)

Fine tubular petals; diameter, 12 inches. Excellent for pot culture. Matures October 25. 25c each.

Sunny Slope Mums Gardens are constantly offering NEW and beautiful chrysanthemum varieties of their own creation.

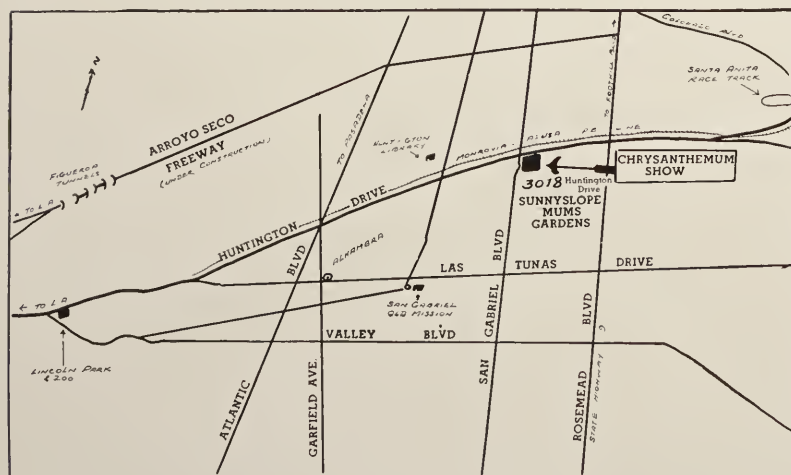


Section of Front Entrance To Our Show and Portion of Large Flowering Exhibit



Cascade Chrysanthemum trained into Eagle shape planted in pot.

- From Long Beach and South. Take Rosemead Blvd. (Highway 19) to Huntington Drive. Turn left on Huntington Drive to our Nursery.
- From Hollywood and North. Take Colorado Blvd. through Glendale, Eagle Rock, and Pasadena to San Gabriel Blvd. Turn left on San Gabriel Blvd. to Huntington Drive. Our Nursery is at the S.E. corner of the intersection.
- From Riverside and Pomona Districts. Take Foothill Blvd. (Highway 66) to Huntington Drive at Arcadia. Follow West on Huntington Drive to our Nursery.



TO OUR PATRONS

WE WISH to express our deep appreciation to every one of our friends and patrons for their loyal support, enabling our Annual Chrysanthemum Show always eclipsing that of the previous year. Within a relatively short number of years we have expanded and now we consider ourselves the largest chrysanthemum propagators in the West, which we believe, is the result of your loyal support and encouragement, and we are forever grateful to you.

We have listed in this catalog only the varieties that have been popularly approved by thousands of discriminating garden enthusiasts, whose orders we have tabulated after the fall show. It is therefore safe to conclude that any of the following are generally accepted and proven best varieties in their particular classes without our specific recommendations. A kind patron laughingly remarked last fall, "I need ten acres to grow all the varieties I wish to buy from you."

We hope the cultural suggestions for Cascades and other chrysanthemums appearing elsewhere in this catalog will be of some assistance to you.

Our cuttings of chrysanthemums are taken from strong and healthy FIELD GROWN PLANTS.

SUNNY SLOPE 'MUMS GARDENS.

Thousands of Chrysanthemum lovers attend our show every year and agree it is the best in the west.



Annual CHRYSANTHEMUM SHOW

The pictures on these pages are partial views of our CHRYSA NTHEMUM SHOW which we hold at our Gardens every fall. Our show runs over 60 days starting with varieties blooming in early October and ending with late sorts in December. Your garden requirements for early, midseason, and late blooming varieties can be easily selected when chosen during these different seasons.

Don't miss this colorful exhibition. Admission of 10c refunded with a \$1.00 purchase.



CASCADDES
At our Fall Show
October and November



Cascade Chrysanthemum LANDSCAPED WITH FISH POND IN CENTER

CASCADE VARIETIES

Rate: 10c each, \$1.00 dozen; 15c each, \$1.50 dozen; 25c each, \$2.50 dozen. Dozen rate applies to one dozen of one name.

	Each	
ANNA. White single with yellow center, blooms prolifically.....	10c	(M)
AGGAPINA. Bronze anemone.....	15c	(M)
CHIYO. (CC-11) Excellent reddish bronze anemone.....	25c	(M)
CHUSHIN. (J-18) Bright red single with yellow center.....	25c	(M)
COMET. Pinkish-cream anemone type.....	25c	(L)
DRAGON. (RC-24) Bronze single-tubular petals.....	25c	(M)
EARLY YELLOW. Early yellow single.....	15c	(E)
EASTERN STAR. Lavender anemone type.....	25c	(L)
EVENING STAR. (RC-14) An outstanding brilliant yellow anemone type with deep golden center.....	25c	(M)
HOKOW (RC-26) Good pink, long spoon-like petals.....	25c	(M)
HUYO. (CC-3) Pink. Very branching long grower.....	25c	(M)
JANE HARTE. Yellow sport from Anna. See illustration.....	10c	(M)
KOTO. Yellow anemone of spoon-end type.....	15c	(M)
KOYEN. Yellow anemone type with large petals.....	15c	(M)
LAVENDER MIST. (J-2) Lavender anemone type. Very branching habit and easily trained, recommended variety.....	25c	(M)
LILAC VEIL. (CC-2) Purple anemone type. We recommend this variety for its great popularity and easy growing habit.....	25c	(M)
MEIYO. (RC-8) Gold with open spoon-end; red. Very late.....	25c	(L)
MOONLIGHT. (RC-20) Yellow star-like single with tubular petals.....	25c	(M)
ORION. (RC-9) Reddish bronze. Yellow center with open spoon-end petals.....	25c	(L)
POINT LOMA. Deep pink purple. Splendid grower.....	35c	(M)
PURPLE QUEEN. Purple anemone type. Excellent grower.....	15c	(M)
SATURN. (J-14) Pink single with yellow center.....	25c	(M)
SEION. (J-6) White anemone type with yellow cushion.....	25c	(E)
SNOW ON THE PINE. White single with spoon-end tips.....	25c	(E)
SPRING MIST. (SD-90) Lavender feathery type. Excellent variety.....	50c	(M)
SUROKU. White anemone with large yellow cushion.....	25c	(E)
TENREI. (RC-34) Soft pink single; yellow center, spoon-end tubular petals.....	25c	(L)
TOYEN. (CC-8) Outstanding pink single.....	25c	(M)
VEGA. (J-12) Pure white anemone.....	25c	(E)
YAMABUKI. Yellow anemone type with large cushion center.....	25c	(L)

(E) Early
(M) Midseason
(L) Late

JANE HARTE (Yellow)
6x10 feet. Picture shows one season's growth started from cutting in February. 10c each.



CASCADE Collection No. 1

(Types: Singles & tubular spoon-end tips). See pictures on right.

One each of the following:

DRAGON.....Bronze
SPRING MIST.....Lavender
MOONLIGHT.....Yellow
TENREI.....White
CHUSIN.....Red
POINT LOMA.....Lavender

Catalog price \$1.85

Collection Offer . . . \$1.50

CASCADE Collection No. 2

(Types: Anemone). See pictures on right.

One each of the following:

LILAC VEIL.....Lavender
EVENING STAR.....Yellow
VEGA.....White
HUYO.....Pink
CHIYO.....Bronze

Catalog price \$1.25

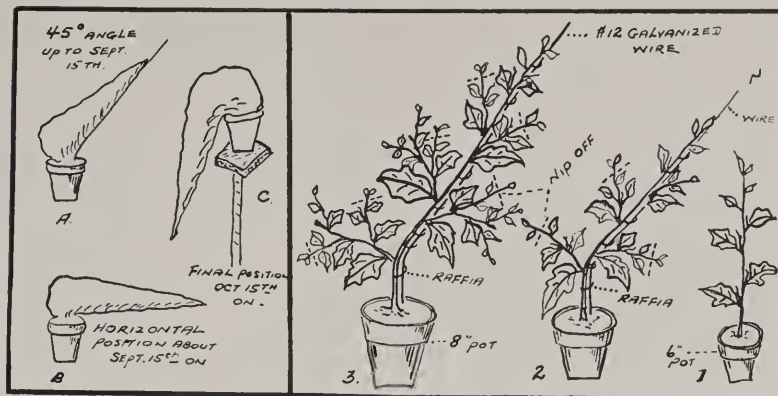
Collection Offer . . . \$1.00

CASCADE TYPES

Top: Anemone types.
Bottom: Singles, tubular, and spoon-end types.



Culture for Cascades



Tying and Pinching (see drawings and photos)

TYING AND PINCHING (See drawings and photos above). When the plant grows to about 12 inches tall (drawing No. 1), it is bent from about the middle and the end tied to a fairly long No. 12 size galvanized wire which is bent at an angle of 45 degrees (as in Fig. 2). The supporting wire should point to north and the leader must be tied to it with raffia (Figs. 2 and 3) at least every seven days. All the laterals and the sub-laterals should be pinched at every second or third joints as in Fig. 2, and this operation should be repeated continuously as they grow until around September 15th. As the plant increases in width an additional support is necessary to prevent toppling over on one side as in Fig. 4. The main leader is lowered gradually so that it will be in the horizontal position around September 15 as in Fig. B. When the buds begin to form the main stem starts the gradual vertical bending from its horizontal level with the surface of the plant now facing south as in Picture 5. When the buds show color, the pot is placed on high position so that the sprays will not touch the ground and bent to the final vertical position (as in Figure C. Also see cut for Jane Harte).

PREPARATION OF SOIL. Prepare the compost by mixing well three-fifths by volume of medium heavy loam and the balance two-fifths of leaf mold and well decayed cattle manure (proportion of two-thirds leaf mold and one-third manure). In addition to this a five inch potful of bone-meal may be added to every three bushels of this soil. This compost may be prepared in large quantity and can be stored in shelter for later use.

FERTILIZER. Twice a month applications of commercial fertilizers (Gaviota, vigoro, etc.) should be made during the growing months starting from early June up to the formation of their buds. The amount of fertilizer to be used depends largely upon the size of the plant. It is cautioned not to over-feed the plant, always remembering that very light applications frequently made is far better than over-dosing the plant at any single application.

RE-POTTING. The plants should be shifted into 6-inch pots when bought from us in little pots. Further two to three shift-ings into larger pots are required during the season, and these shifts should be made before the plants form their first root network on the inside of the pot. The final potting may be made about the middle of August and the sizes of pots used depends on the size and variety.

LARGE FLOWERING COMMERCIAL

RATE:	Each	Dozen	per 100
	\$.10	\$.50	\$ 3.00
	.10	.100	5.00
	.15	1.50	6.00
	.25	2.50	10.00



OHGON NO SATO (Yellow)

One of our Imported Commercial large flowering varieties. Bears very large blooms of compact incurve types. Matures Oct. 25 on. 25c ea.

	Each	Doz.	
ADONIA. Pink	\$.25	\$2.50	(M)
*ALBATROS. Very good white	.25	2.50	(M)
*AMBASSADOR. White	.10	.50	(E)
*ANNA KASKAS. Yellow	.10	1.00	(E)
*APRICOT MAY WALLACE. Apricot pink	.15	1.50	(L)
*BETSY ROSS. Early white	.10	.50	(E)
*BLAZING GOLD. Bright golden perfect ball. Very good China mum **early	.25	2.50	(E)
BONNAFON. Yellow ball	.10	.50	(M)
BONNAFON SHIBUYA. Yellow ball	.10	.50	(L)
*BRONZE FRICK	.10	.50	(L)
*BRONZE MISTLETOE	.10	.50	(L)
*CHADWICK WHITE	.10	.50	(L)
*CHARLES RAGER. White	.10	.50	(M)
*CHATTANOOGA. White	.10	.50	(L)
*CHATTANOOGA YELLOW	.10	.50	(L)
*CHIEFTAIN. Pink	.10	.50	(E)
*CHIEFTAIN WHITE	.10	.50	(E)
*COL. F. M. ALGER. Yellow	.25	2.50	(M)
*COLUMBUS DISPATCH. Golden	.10	.50	(L)
CORONA. Yellow	.15	1.50	(M)
*DEC. BEAUTY IMPROVED. White	.25	2.50	(L)
*DEC. QUEEN. Yellow	.10	.50	(L)
*DETROIT NEWS. Good bronze	.10	.50	(E)
*DISTINCTION PINK	.10	.50	(L)
*DOLLY D'EMPLE. Excellent lemon yellow	.10	1.00	(L)
*EARLY FROST. Earliest white	.10	.50	(E)
*EARLY QUALITY. Excellent early white	.25	2.50	(E)
*EDWIN SEIDWITZ IMP. Very good pink	.15	1.50	(L)
*EVENING GLOW. Yellow	.10	.50	(E)
*FRIENDLY RIVAL. Rich golden	.10	1.00	(L)
*GARNET KING. Best garnet red	.10	.50	(M)
*GLENVIEW. Bronze	.10	.50	(M)
*GLITTERS. Orange bronze	.10	.50	(E)
*GOLDEN MRS. ROSS. Orange	.10	1.00	(L)

	Each	Doz.	
*GOLDEN OAK. Orange	.25	2.50	(L)
*GOOD NEWS. Good yellow	.10	.50	(E)
*HARVARD. Crimson red	.10	.50	(L)
*HELEN FRICK. Lavender	.10	.50	(L)
*HILDA BERGEN. Bronze	.10	.50	(E)
*INDIAN CHIEF. Light bronze	.15	1.50	(E)
INTENSITY. Red	.10	1.00	(M)
*JUBILEE. Yellow perfect ball	.25	2.50	(M)
*KEYSTONE. Good early bronze	.10	1.00	(E)
*MAJOR ED. BOWES. Lavender	.15	1.50	(E)
*MARKETEER. Good white	.25	2.50	(M)
*MAY WALLACE. Pink	.15	1.50	(L)
*MEFO. Cream white	.10	.50	(M)
MIKADO. Red and gold	.10	1.00	(M)
*MISS FLORA BOWERS. Very large white	.25	2.50	(M)
*MISTLETOE PINK	.10	.50	(L)
*MOHAWK CHIEF. Red	.10	1.00	(L)
*MONUMENT. Excellent commercial white	.15	1.50	(L)
*MRS. DAVID F. ROY. Very good red and gold	.15	1.50	(E)
*MRS. H. E. KIDDERS. Good yellow	.10	.50	(E)
*MRS. R. M. CALKINS. Golden	.10	.50	(L)
*OHGON NO SATO. See illustration	.25	2.50	(M)
*OKEDA. Early bronze	.10	.50	(E)
*ORCHID QUEEN. Good orchid pink	.25	2.50	(M)
*PETER JOHN. Good late pink	.25	2.50	(L)
*PINK DAWN. Pink	.15	1.50	(E)
PRES. TAFT. White	.10	.50	(E)
*PROSPERITY. Very early pink	.15	1.50	(E)
*QUAKER LADY. White	.10	.50	(L)
*QUAKER MAID. White	.10	.50	(E)
REGINA. Pink	.10	.50	(M)
ROMAN GOLD. Golden	.10	.50	(M)
*SILVER WEDDING. White	.10	.50	(L)
*SNOW WHITE. White	.10	.50	(M)
*SUNSET. Apricot buff	.15	1.50	(E)
*SUNGOLD. Good late golden	.10	.50	(L)
*SUNNYSLOPE GOLD. Excellent cut mum for early October	.25	2.50	(E)
*THANKSGIVING PINK	.10	.50	(L)
*WHITE FRICK	.10	.50	(L)
*YELLOW GOLD	.10	1.00	(M)
*YELLOW GOWN. Very early	.10	.50	(E)
*YELLOW MONUMENT	.25	2.50	(L)

*Varieties proven or generally accepted as best for cut mum.

**China Mum—to grow 4 to 6 blooms per plant to obtain medium size flowers.

EXHIBITION TYPES

RATE:	Each	Dozen	per 100
	\$.15	\$1.50	\$ 6.00
	.25	2.50	10.00
	Each		
ALICE BENSON. White	\$.25		(M)
*APRICOT QUEEN. Apricot orange	.15		(E)
ANN NICHOLS. Pink	.15		(M)
*ARMISTICE DAY. Red and Gold reverse	.15		(L)
BOAKE CARTER. White	.50		(M)
BONNAFON RED. Purplish red	.15		(L)
*BIRMINGHAM. Excellent garnet red	.25		(M)
BUTO. Very early pink	.25		(E)
*CERTAINTY. Excellent bronze	.25		(L)
*CLARA E. TRUEMAN. Very large red and gold	.75		(M)
CONQUEST. Large incurve bronze	.25		(E)
*COUNTRY MAIDEN. See illustration	.50		(M)
*DR. INGLIS. Purple with silver reverse	.15		(M)
EDWIN M. BYRNS. Bronzy red	.15		(M)
ELBERON. Pink	.15		(M)
ELLEN MACKAY. Excellent yellow (limit 1)	.75		(M)
ENTON BEAUTY. Dark red	.25		(M)

E—Early; M—Midseason; L—Late varieties.

	Each	
FLOYD GIBBONS. Pink.....	.15	(M)
FRANCINE. Bronze.....	.15	(M)
*GARSON'S LARGE PINK. Pink.....	.25	(M)
G. KONNO. Salmon pink.....	.25	(M)
*GOLDEN ARBINI. Excellent true golden.....	.15	(M)
GOLDEN CHAMPION. Very large yellow.....	.15	(E)
GOV. GREEN. Reddish bronze.....	.15	(M)
*GRACE STURGIS. Purple with silvery reverse. (Limit one dozen).....	.50	(M)
*HARVEST MOON. Yellow. Extremely large.....	1.00	(M)
*HELENA POCKETT. Large white ball.....	.75	(M)
HENRY E. TRUEMAN. Large white.....	.25	(E)
*HENRY WOOLMAN. Very large red.....	1.00	(E)
ILO. Delicate pink.....	.50	(E)
JOYFUL. Lavender incurve. Imported.....	.50	(L)
*J. W. GARDENER. Reddish bronze. Sport of Dr. Inglis.....	.50	(M)
*LADY HOPETOUN. Pink shaggy.....	.15	(E)
*LA FRANCE. Lavender with silvery reverse.....	.15	(E)
MAJESTIC. Orange.....	.15	(L)
MARY L. CLARK. Light pink.....	.15	(M)
MISS MILICENT ROGERS. Bronze and gold.....	.15	(E)
MRS. ALLEN. Bronze. Shaggy.....	.15	(L)
*MRS. AUGUST KOCH. Light apricot bronze.....	.15	(M)
MRS. CRAVANS. Pink.....	.15	(M)
MRS. HARVEY FIRESTONE. Red and gold.....	.15	(M)
MRS. HENRY EVANS. Reddish bronze.....	.15	(M)

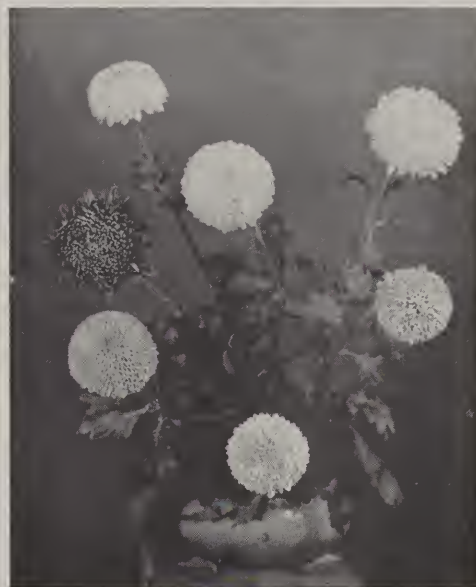
	Each	
TOM CARRINGTON. Purple.....	.15	(L)
*VERMONT. Pink. Shaggy.....	.15	(M)
*VERMONT WHITE. Shaggy.....	.15	(M)

*Recommended varieties; E—Early; M—Midseason; L—Late varieties.



POCKETTS VARIETY—EXHIBITION TYPE
Come in Four Colors.

MRS. RITA MITCHELL. Bronze.....	.15	(L)
*NERRISA. Pink.....	.15	(L)
*NERRISA WHITE.....	.15	(L)
P. E. MALLORY. White.....	.25	(M)
*POCKETT GOLDEN. See illustration.....	.25	(M)
*POCKETT LOUISA. White. See illustration.....	.15	(M)
*POCKETT THOMAS. Pink. See illustration.....	.15	(M)
*POCKETT YELLOW. See illustration.....	.15	(M)
*PRINCESS TERU. Pink.....	.15	(L)
REMUS. Purple. Very late.....	.25	(L)
SEC. HYDE. Pinkish bronze.....	.15	(M)
SEMINOLE CHIEF. Bronze.....	.15	(M)
SHIRLEY MAMMOTH. Very large white.....	.50	(E)
SNOW BOUND. White.....	.15	(E)
*THE BIG CHILD. Large yellow.....	.15	(M)
TURNER BRONZE. Light bronze.....	.15	(M)
*TURNER PINK. Light pink.....	.25	(M)
*TURNER WILLIAM. White.....	.15	(M)
TURNER YELLOW. Light yellow.....	.15	(M)



POMPONS—DISBUDED

True Pompons are small blossoms which are either flat or globular as in Pompon Dahlias and Zinnias. Diameters ranging from less than 1 inch to 3½ inches.

POMPONS AND BUTTONS

RATE:	Each	Dozen	per 100
	\$.10	\$.50	\$ 3.00
	.15	1.25	5.00
	.25	2.00	8.00
*ADORABLE. Golden button type.....			\$.15 (L)
AGATE. Yellow button.....			.10 (M)
*AMARANTHEA. Purple pom.....			.25 (L)
*AMELIA. Pink dwarf. (Azalia mum type).....			.10 (E)
†ANGELO. Large pink pom.....			.10 (E)
*†ARCADIA. White large pom.....			.15 (E)
ARON O'DORIS. Bronze button.....			.10 (M)
*AVALON. Bronze pom.....			.10 (L)
*BABY. Smallest yellow button.....			.10 (M)
BONNIBEL. Bronze button.....			.10 (E)
BONNIE MAID. Pink pom.....			.10 (M)
BRIGHT EYE. Pink button.....			.10 (M)
BRIGHT SPOT. White button.....			.10 (M)
*BRISTOLITE. Orange pom.....			.10 (L)
BRONZE PERFECTION. Bronze button.....			.10 (M)
*BURMA. Golden bronze pom.....			.25 (M)
*CALIFORNIA FIREBIRD. Bronze feathery.....			.10 (L)
CAMEO QUEEN. White dwarf (Azalia mum type).....			.10 (E)
*CAMPFIRE. Reddish bronze pom.....			.10 (L)
*CAVALCADE. Late bronze pom.....			.25 (L)
CHICAGO PEARL. White pom.....			.10 (M)
CHRISTMAS RED. Good wine-red button.....			.10 (L)
CLARA JAMES, IMP. Dark bronze pom.....			.10 (E)
CLARE. White button.....			.10 (M)
CLAREMONT. Bronze decorative.....			.10 (L)
*CORDOVA. White pom.....			.10 (L)
CRIMSON QUINTUS. Red and Gold.....			.10 (M)
CRIMSON SHEEN. Wine purple.....			.15 (E)
CRYSTAL JEWELL. White button.....			.10 (M)
†CRYSTAL WHITE. White pom.....			.10 (M)
*DAINTY MAID. White button.....			.10 (M)
*DIANA. White pom.....			.10 (M)
*DOROTHY NEHRLING. Purple button.....			.10 (L)

(Continued on next page)

E—Early; M—Midseason; L—Late varieties.

POMPONS—Continued

	Each	
DOROTHY TURNER. Dark bronze pom.	.10	(L)
*†DR. W. R. PETTIT. Best early pink pom.	.15	(E)
*DUSKY MAID. Bronze pom.	.25	(M)
ELETRA. Late bronze pom.	.25	(L)
*†ELORA. Pink pom.	.10	(E)
*ETHEL. Red button.	.10	(M)
*FEZ. Bronze pom.	.10	(M)
FIREBALL. Red pom.	.10	(E)
*FIREBIRD. Early bronze pom.	.10	(E)
FLORA. Red pom.	.10	(M)
GERALDINE. Yellow button.	.10	(L)
GLORIETTA. Early dwarf. Light pink.	.10	(E)
*GLOW. Best late orange.	.10	(L)
*GOLDEN CORDOVA. Large pom.	.25	(L)
*GOLD FINCH. Yellow pom.	.10	(E)



BUTTONS—POMPONS

*†GOLDEN FAIRY. Yellow pom early.	.10	(E)
*GOLDEN SPRAY. Early pom.	.25	(E)
HARMONY. Late bronze pom.	.25	(L)
*HASEGAWA YELLOW. Large pom.	.10	(L)
*HELEN HUBBARD. Red decorative.	.10	(M)
*HELEN NEWBERRY. White pom.	.10	(L)
*HIGHLIGHT. Pink pom, dark center.	.10	(M)
IRENE RICH. Pink pom.	.10	(M)
ITSA. Bronze button.	.10	(E)
*†IZALCO. Wine purple. Very good pom.	.25	(M)
*JEWELL. Best early lavender pom.	.10	(E)
*JOAN WELLS. Very good apricot with pink center. Pompon.	.10	(E)
*JUDITH ANDERSON. Good yellow button.	.10	(E)
KATHLEEN JOHNSON. Late bronze pom.	.25	(L)
KING MIDAS. Early hardy yellow.	.10	(E)
*KUWAHARA WHITE. Late pom.	.10	(L)
KUZUKA. Early pink pom.	.10	(E)
*LETITIA. Pink pom with dark center.	.10	(M)
LITTLE BILLY. Yellow button.	.10	(M)
LITTLE PET. Purple button.	.10	(M)
LITTLE TOT. Pink button.	.10	(M)
LYLIAN. White early dwarf.	.10	(E)
MAGARTHA. Pink pom.	.10	(M)
MARY L. HALL. Golden pom.	.10	(E)
MARY PICKFORD. White button.	.10	(M)
*†MASAKA. Good yellow pom.	.10	(E)
*†MASTERPIECE. Improved pink doty.	.15	(M)
*MILO ASTEL. Bronze and gold shaggy.	.15	(M)
MISSION. Pink pom with dark center.	.10	(M)
*MOTHER OF PEARL. Lavender pom.	.15	(M)
*MRS. MARY HOOKER. Good late red pom.	.10	(L)
*MRS. MORGAN BULKELEY. Good pink pom.	.15	(M)
*MRS. NELLIE KLERIS. Pink pom.	.15	(M)
MULDOON. Dark lavender pom.	.10	(E)
NEMO. Cream button.	.10	(L)
NESTA. Bronze pompon.	.10	(E)
NEW YORK. Orange pom.	.10	(M)
NORINE. Yellow button.	.10	(L)
NOVEMBER BRONZE. Pom.	.10	(M)

E—Early; M—Midseason; L—Late varieties.

	Each	
*NOVEMBER GLOW. Orange bronze. Ball.	.25	(M)
NUGGETTS. Yellow button.	.10	(M)
*PATSY DAWD. Red button.	.10	(M)
PERFECTO. Yellow pom.	.10	(M)
*PINK DOT. Good pink pom with dark center.	.10	(E)
*†PINK DOTY. Good large pink pom.	.10	(E)
PINK LASSIE. Pink pom.	.25	(L)
PIRATE GOLD. Yellow pom.	.25	(M)
PRINCETON. Good orange.	.10	(M)
RED BEAUTY. Reddish bronze.	.10	(M)
RED DOTY. Red pom.	.10	(M)
*REV. HORACE BUSHNELL. Cream pom.	.15	(E)
RICH GOLD. Yellow pom.	.25	(M)
RISIN SUN. Pink, dark center.	.15	(E)
ROBERT HENDERSON. Lavender button.	.10	(M)
*ROBIN HOOD. Reddish bronze pom.	.15	(M)
RODI. Dark pink button.	.10	(M)
*†ROMOLA. Pink pom.	.10	(L)
ROSE ADORE. Pink button.	.15	(E)
ROSY DOT. Pink button.	.15	(M)
*ROYAL CRIMSON. Pom.	.25	(L)
ROYAL RED. Dwarf.	.15	(M)
SAN ANTONIO. Large pink pom.	.25	(L)
SEA GULL. White pom.	.15	(E)
*SHAKER LADY. Lavender pom.	.10	(E)
SHEILA. Lavender ball pom.	.25	(E)
SONIA. Purple dwarf.	.10	(E)
*†SILVER BALL. Pure white pom.	.10	(E)
STARDUST. Late orange pom.	.10	(L)
ST. LOUIS GOLD. Late pom.	.10	(L)
THANKSGIVING GEM. Bronze button.	.10	(L)
THORINA. Red pom.	.10	(E)
*†THYRA. Lavender. Best compact ball, good disbudded pom, also good potted.	.10	(M)
TOUCHDOWN. White pompon.	.10	(M)
TREASURE GOLD. Late pompon.	.25	(L)
*VARSITY. Yellow button.	.10	(L)
VERA VICTORIA. Yellow pom.	.10	(E)
*VIOLA. Violet purple pom.	.10	(E)
*†WHITE DOTY. Good disbudded pom.	.10	(E)
WHITE GEM. Button.	.10	(L)
*WHITELIGHT. Late pom.	.25	(L)
WHITE TONQUINN. Late pompon.	.25	(L)
*WILDFIRE. Excellent late bronze pom.	.15	(L)
WM. SABEY. Yellow pom, dwarf.	.10	(M)
*YELLOW DOT. Excellent pom, dark center.	.10	(E)
YELLOW FELLOW. Large pom.	.10	(M)

The Quintuplets

Annette (Delicate Pink)	(M)
Cecile (Light Yellow)	(M)
Emelie (Pure White)	(M)
Marie (Orange)	(M)
Yvonne (Red)	(M)

†—Large Pompons. Disbud.

*Recommended varieties; E—Early; M—Midseason; L—Late varieties.

ANEMONE TYPES

RATE:	Each	Dozen	per 100
	\$.10	\$.50	\$ 3.00
	.15	1.25	5.00
	.25	2.00	8.00
*ADMIRATION. Lavender.			\$.15 (E)
*ALOSYA. Yellow.			.15 (M)
*ANTIGO. Deep purple.			.15 (M)
*BEAUTIFUL LADY. Light lavender.			.15 (L)
*BIRDINE. Lavender.			.15 (M)
*BIZARRE. Lavender.			.15 (M)
*BLANCHE. Excellent white.			.15 (M)
*BRIGHTON. Purple with yellow cushion.			.25 (M)
*BRONZE CHARM. Large cushion.			.15 (L)
*BRONZE SUPREME. Good late bronze.			.15 (L)
C. D. WOLFE. White with dark dot.			.10 (L)
*CITRUS QUEEN. Good large yellow.			.15 (M)
CHROME EMERALD. Bronze.			.15 (L)
*CORAL BLAZE. Excellent large bronze.			.15 (L)
*CRIMSON GLOW. Red with large cushion.			.10 (L)

ANEMONE TYPES—Continued

	Each	
*DARK PINK SUPREME. Good late.....	.15	(L)
*ESTRELITA. Good bronze.....	.10	(L)
*FAITH. Ivory with yellow cushion.....	.15	(M)
*FRIEDA. Very good lavender.....	.15	(M)
GRACELAND. White.....	.10	(E)
H. J. BALLOUGH. Lavender.....	.15	(M)
LA NONA. Salmon pink.....	.10	(M)
LIDA THOMAS. White.....	.10	(M)
*LITTLE AMERICA. White.....	.15	(M)
*LONG ISLAND BEAUTY. Light pink.....	.15	(M)
*MARIE LOUISE. Very good white.....	.15	(L)
*MARITZA. Large yellow.....	.15	(L)
MRS. A. G. WILSON. White.....	.10	(L)
MRS. B. S. MECHLING. Orange bronze.....	.15	(M)
*MRS. J. S. ROBERTS. Very large lavender.....	.25	(M)
*MRS. JOHN SHIELDS. Sulphur yellow.....	.15	(M)
MILTON. Red.....	.15	(L)
*NEW GOLD. Bright yellow.....	.15	(L)
NORMA. Light pink.....	.10	(M)
*ORCHID BEAUTY. Deep pink.....	.10	(L)
OTTO BLUM. Pale pink.....	.25	(M)
*ROSE MADDER. Deep rose pink.....	.15	(M)
*SINCERITY. Pure white with large cushion flower same as "Rose Madder".....	.15	(E)
SULPHUR FRILL. Sulphur yellow.....	.15	(M)
*SUZANNE MILLER. Light bronze.....	.15	(M)



ANEMONE—DISBUDED

*THE TITAN. Large red.....	.10	(M)
TOPKNOT. Lavender.....	.10	(M)
*TUXEDO. A lovely pink.....	.15	(M)
VERONA. Light bronze.....	.15	(M)
WELCOME. Dark pink.....	.10	(M)
WHITE ANEMONE. Good white.....	.15	(L)
*WHITE CLUSTER. Best late white.....	.25	(L)
*WHITE NORMA. A sport of Norma.....	.15	(L)
WHITE SUPREME. Good late.....	.10	(L)
WILFREDA. Yellow.....	.15	(L)
*YELLOW SUPREME. Good late.....	.15	(L)
*YOLANDA. Velvet bronze.....	.15	(L)

*Indicates good disbudded, also recommended varieties.

SINGLE VARIETIES

RATE:	Each	Dozen	per 100	
	\$.10	\$.50	\$ 3.00	
	.15	1.25	5.00	
	.25	2.00	8.00	
*ANNABEL. Salmon pink.....	\$.10			(L)
*BIJO. Pink.....	.15			(E)
*CALIFORNIA PEACH. Dark pink.....	.15			(E)
*CARNELIA. Good red.....	.15			(L)
*CRIMSON MONARCH. Large red.....	.25			(L)
*DAZZLER LATE. Good red for Xmas.....	.10			(L)
*D. BAKER. Reddish bronze.....	.10			(E)
*FAITHFUL. Delicate pink. Semi-double with green center. When disbudded will grow flowers 6" dia.....	.15			(M)

E—Early; M—Midseason; L—Late varieties.



SINGLE OR DAISY TYPE

	Each	
*GLADYS DUCKHAM. Good white.....	.10	(L)
GOLDEN GLEAM. Yellow.....	.10	(M)
GOLDEN SEAL. Yellow.....	.10	(M)
*GRANADIER IMP. Red.....	.25	(E)
*HASEGAWA MINORU. Good late bronze.....	.10	(L)
*HASEGAWA PINK. Good late pink.....	.10	(L)
HASEGAWA POINSETTIA. Red.....	.10	(L)
H. M. TOTTY. Bronze.....	.10	(M)
*IDA SKIFF. Bronze.....	.10	(E)
JEAN. White.....	.10	(M)
JOHN GARSON. Bronze.....	.15	(M)
KRAMER BUFF. Orange.....	.15	(M)
LADY ASTOR. Dark red.....	.10	(L)
LIGHTHOUSE. Red.....	.10	(M)
LATE PURPLE.....	.10	(L)
L. BROWN. Late bronze for Christmas.....	.10	(L)
MABEL SEYMOUR. White.....	.15	(M)
*MELBA. Bronze (excellent variety).....	.10	(M)
*MELBA RED.....	.10	(M)
MRS. C. S. MCKINNEY. Yellow.....	.10	(M)
*MRS. JAMES S. KELLY. Blush white with pink lilac shading. Good disbud.....	.50	(M)
MRS. LOU RIVERS. Light bronze.....	.25	(L)
*PAULINE. Yellow.....	.10	(M)
*PINK PRIDE. Best pink.....	.10	(M)
PROF. BALL. White.....	.10	(M)
*RADIANT. Red.....	.10	(M)
RED BUTTERFLY (D44). Wine red.....	.10	(M)
*RED ROVER. Very good red and gold.....	.15	(M)
SCARLET WONDER. Red.....	.25	(L)
S. B. GARSON. Bronze.....	.10	(M)
S. P. GARSON. Pink.....	.10	(M)
*S. S. GARSON. Salmon pink.....	.10	(M)
*SUNBURST. Bronze.....	.10	(L)
*TAGOYA. Good red.....	.10	(M)
*VALENCIA. Good pink.....	.10	(L)
WHITE MENSA. White.....	.10	(M)

*Recommended varieties; E—Early; M—Midseason; L—Late varieties.

HARDY KOREAN TYPES

RATE:	Each	Dozen	per 100
	\$.10	\$.50	\$ 3.00
	.15	1.25	5.00
	.25	2.00	8.00

These varieties are especially recommended for regions where early frost prevail as they possess hardy, early flowering qualities.

SINGLES

	Matures
HEE. Red violet.....	Oct. 20
HU. Yellowish bronze.....	Oct. 12
MIE. Bright red.....	Oct. 10
YO. Excellent pink.....	Oct. 10

HARDY KOREANS—Continued

	Matures	DOUBLES AND SEMI-DOUBLES	Matures
NANA. Splendid yellow.....	Oct. 12		
TAO. Light pink.....	Oct. 10	BURGUNDY. Cerise crimson, 25c each.....	Oct. 5 on
JUHICH. Salmon pink.....	Oct. 15	CALIPH. Red, 15c each.....	Oct. 5 on
JUKU. Red violet.....	Oct. 15	EMBER. Bronze, 15c each.....	Oct. 5 on
NISAN. Bronze.....	Oct. 15	GRANNY SCOVILL. Apricot, 15c each.....	Oct. 5 on
NIYA. Brick red.....	Oct. 10	INDIAN SUMMER. Bronze, 10c each.....	Oct. 5 on
SANGO. Salmon.....	Oct. 10	LAVENDER LADY. Silvery lavender, 25c each.....	Oct. 5 on
SANKU. Good bronze.....	Oct. 15	MANDARIN. Salmon bronze, 15c each.....	Oct. 5 on
YOSHI. Bronze.....	Oct. 15	ROBERTA COPELAND. Salmon rose, 25c each.....	Oct. 5 on
YOYA. Bronze.....	Oct. 15	ROMANY. Bronze, 15c each.....	Oct. 5 on
DEPHENE. Pink.....	Oct. 20	ROSE GLOW. Raspberry rose, 25c each.....	Oct. 5 on
INNOCENCE. White.....	Oct. 1	SALADIN. Coral red, 15c each.....	Oct. 5 on
APPOLO. Reddish bronze.....	Oct. 1	SYMPHONY. Coppery rose, 15c each.....	Oct. 5 on
ASTRID. Good light pink, 15c each.....	Oct. 1	THE MOORE. Wine red, 15c each.....	Oct. 5 on

CULTURAL SUGGESTIONS COMMERCIAL AND EXHIBITION TYPES

SOIL PREPARATION. Prepare the beds early by spading in well decayed cattle manure or bone meal working in thoroughly to a depth of 12 to 15 inches. Use peat if the soil is too sandy or too heavy.

FERTILIZING. Few applications of commercial fertilizers such as "Gaviota," "Vigoro" or other complete fertilizers should be used during the summer months. The feeding should be avoided during the periods of extreme heat or when the soil is too dry. Water the soil before applying if it is necessary. It should be stopped when the buds are large enough to make the final selection (Fig. 2 below).

STOPPING. When the plant is established in your garden and when it has developed 2 or 3 pairs of matured leaves, the center or the main growth is nipped off. Then the plant should be restricted to two or three shoots in order to obtain larger blooms. For the late blooming variety, the main growths of these new shoots may be nipped off again around July 15th in order to regulate the height, allowing only the original number of new shoots to rise per stem.

For the large anemones and pompons, allow 6 to 8 growths to a plant. Other cultures for these being similar with those of the larger flowering varieties.



DISBUDDING (see drawing above). Immediately after the new shoots of your selection begin to send out side laterals, they should be removed very close at the base (see lowest lateral of figure 1) at regular intervals of about once a week. The basal shoots should be removed also as they appear. This procedure should be adhered to very religiously in order to obtain successful results.

The first bud produced by the plant is called the "Crown" bud and is distinguished by being surrounded by leaves. The "terminal" bud appears later in clusters surrounded with several flower buds.

The procedure of "taken buds" depends very largely on the variety and no fast rules can be given, but we recommend reserving terminal buds for the Spider types and majority of the early flowering commercial and exhibition types in Southern California. The safest rule, we find, is not to save buds formed before August 20th in our district. The

retention of too early crown buds often results with large percentage of crippled flowers, especially when large amount of nitrogen fertilizer remains in the soil unconsumed by the plant. Again, the hottest period of the year usually comes during the month of September and early October, the hazards of burning of petals and fading of colors are too frequent when early crown is retained in this district.

The final selection of bud should not be made too hastily nor buds are very small (see figure 1). It is also advisable to allow an alternate bud (see fig. 2) to remain until one is certain of all defects when final selection is being made (Fig. 3).

PESTS. Common pests and diseases are thrips, aphids, leaf-tyers, cut worms, mildews, etc. Plants should be examined frequently and sprayed with proper insecticides as recommended by dealers as soon as they are detected. After September 1st we recommend spraying the plants twice a month until buds begin to show color.

STAKING. Every individual stem should be supported with stake or by other means to hold the blooms upright.

BUSH OR GARDEN VARIETIES

Under these types are pompons and buttons, anemones, singles, and hardy Koreans. These varieties are most effective in the gardens when grown low with as much growth as possible. This is obtained by pinching off the center of all the laterals two or three times up to the 1st or 10th of August. This method will prevent the plants from toppling too freely with minimum support.

SPECIAL OFFER

Assorted Collections, including Buttons, Pompons, Singles and Anemones (Non-Labeled)
(Rooted Cuttings)

12
PLANTS
4 Varieties
40c

25
PLANTS
6 Varieties
75c

50
PLANTS
8 Varieties
\$1.40

100
PLANTS
10 Varieties
\$2.50

LARGE FLOWERING COMMERCIAL TYPE

(Rooted Cuttings)
Four Colors Assorted Offer

12
PLANTS
50c

25
PLANTS
90c

50
PLANTS
\$1.65

100
PLANTS
\$3.00



"CHRYSANTHEMUMS UNDER GLASS," by Alex Lurie. We sell and recommend this book. Persons seeking further technical information on Chrysanthemums will find this volume interesting and helpful. Price \$1.50.

BUNBU

Dark orchid-lavender. Proven excellent for cut flowers after several years of growing. Ideal stems and foliage. Height 5 feet. Matures Nov. 1st on. Price 25c each, \$2.50 per dozen, \$12.00 per 100.



SUNNYSLOPE WHITE

(7-72)

The outstanding commercial white for Thanksgiving. This large flower is perfectly incurved ball type of very solid substance enabling long distance shipments without bruising or crushing. We have forced this variety for September flowering under shade. It has a very strong stem and perfect foliage. Surely this is one variety we can recommend to commercial growers without any reservation. Height 4½ feet. Normally blooms November 20th on.

PRICE: 50c each, \$5.00 per dozen, \$30.00 per 100, \$200.00 per 1000.

SUNNYSLOPE 'MUMS GARDENS

3018 Huntington Drive, at San Gabriel Blvd.

• SAN GABRIEL, CALIF.